

iBaan ERP 5.2a - iBaan ERP 6.0a

**User's Guide - To update an iBaan
ERP environment**

© 2002. Baan.

All rights reserved. No part of the material protected by this copyright may be reproduced or utilized in any form or by any means, electronic or mechanical, including photocopying, recording, broadcasting, or by any information storage and retrieval system, without permission in writing from Baan.

Baan assumes no liability for any damages incurred, directly or indirectly, from any errors, omissions or discrepancies between the software and the information contained in this document.

Document Information

Code:	U8118A US
Group:	User Documentation
Edition:	A
Date:	December, 2002

Table of contents

1	To update iBaan ERP with a language	1-1
	Start the iBaan ERP environment	1-2
	<i>On Windows 2000</i>	<i>1-2</i>
	<i>On UNIX</i>	<i>1-2</i>
	Run the iBaan ERP language update	1-3
2	Porting set update on Windows	2-1
	What is a porting set?	2-1
	<i>To update iBaan ERP software on Windows</i>	<i>2-1</i>
3	Porting set update on UNIX	3-1
	What is a porting set?	3-1
	<i>To update iBaan ERP software on UNIX</i>	<i>3-1</i>

User's Guide - To update an iBaan ERP environment	
--	--

About this document

This document describes the procedures that you must carry out during an iBaan ERP Language or Porting Set update. The document supports the following iBaan ERP versions:

- iBaan ERP 5.2a
- iBaan ERP 6.0a.

An Installation Wizard guides the installation process of the software.

The document is intended for iBaan ERP installers, database administrators, and system administrators who are familiar with the system administration of UNIX and Windows 2000 systems.

The parameters that are described during the update installation process in this document are suitable for setting up a basic and default iBaan ERP environment.

This document consists of the following chapters and appendices:

Chapter 1, “To update iBaan ERP with a language,” provides the installation process for updating the iBaan ERP environment.

Chapter 2, “Porting set update on Windows,” provides the installation process for updating the porting set for an iBaan ERP environment on Windows 2000.

Chapter 3, “Porting set update on UNIX,” provides the installation process for updating the porting set for an iBaan ERP environment on UNIX.

1 To update iBaan ERP with a language

It is possible to update the iBaan ERP environment with new software components. In case of a language update, you must make sure that the iBaan ERP environment is up and running.

Check the Baan Global Support Web site for the latest information about a language update:

www.support.baan.com

Important remarks

- After a blocking error, the installer will restart using the old import files that it keeps in the tmp directory. Make sure that if you change something in the import file, you must refresh or remove the tmp files before restarting the import.
- The environment must contain the right package combination, and package VRCs using the official Baan naming conventions.
- The environment must contain the target language code
- The import must be performed when running under the target package combination.

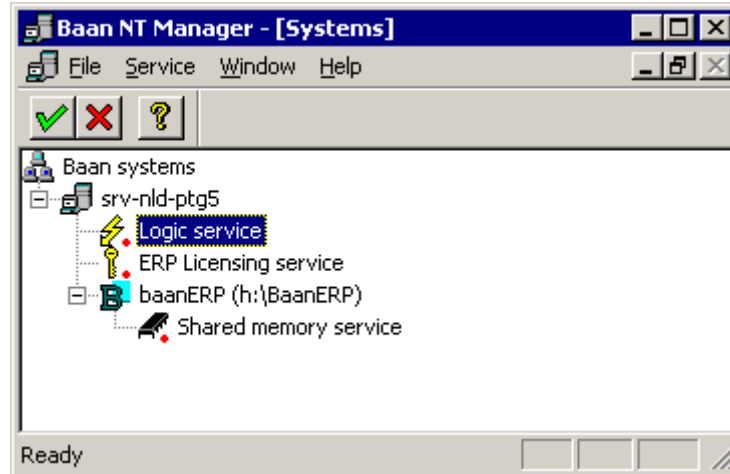
Start the iBaan ERP environment

On Windows 2000

Note that you cannot use Windows 2000 terminal services client. Log on to the server or use a remote desktop application.

Take the following steps on Windows 2000:

- 1 Start the Baan NT Manager.



- 2 Right-click the Server and click **Start**

On UNIX

Complete the following steps on UNIX:

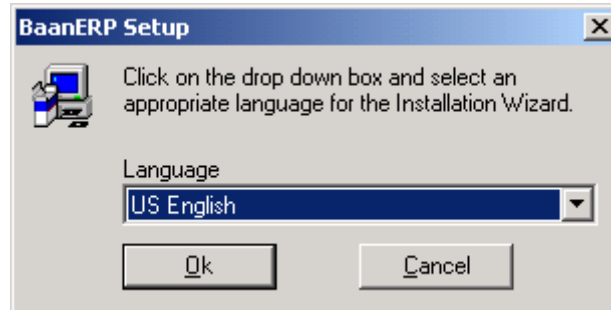
- 1 Logon as **root** on your UNIX system.
- 2 Change directories to directory **\$BSE/etc**
- 3 Run script the **rc.start** as follows:

```
#./rc.start
```

Run the iBaan ERP language update

Take following steps to update the iBaan ERP environment.

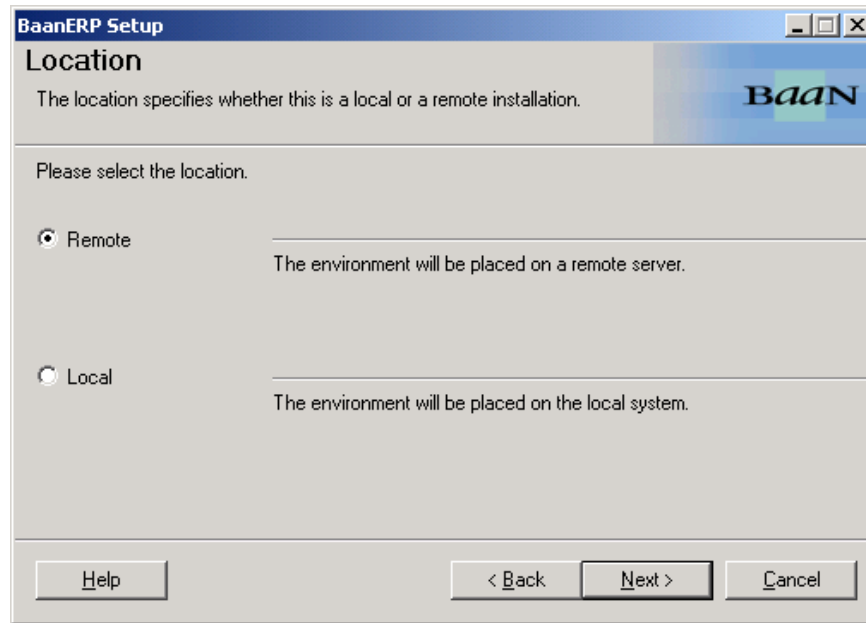
- 1 Insert the iBaan ERP CD-ROM
- 2 If the iBaan ERP installer does not start automatically, click **setup.exe** in the **\setup** directory.



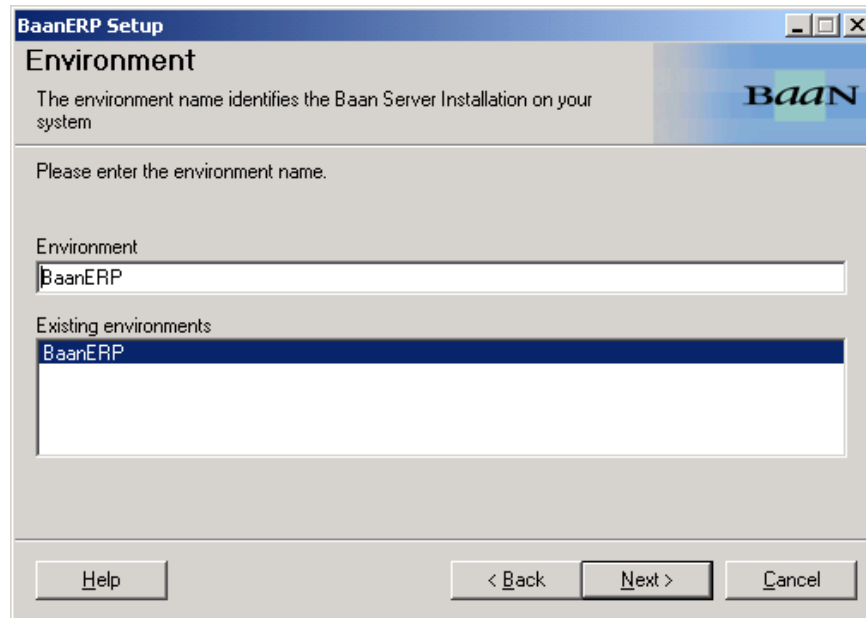
- 3 Click **OK**; the **Welcome** dialog box appears.
- 4 Click **Next** to continue; the **License Agreement** dialog appears.



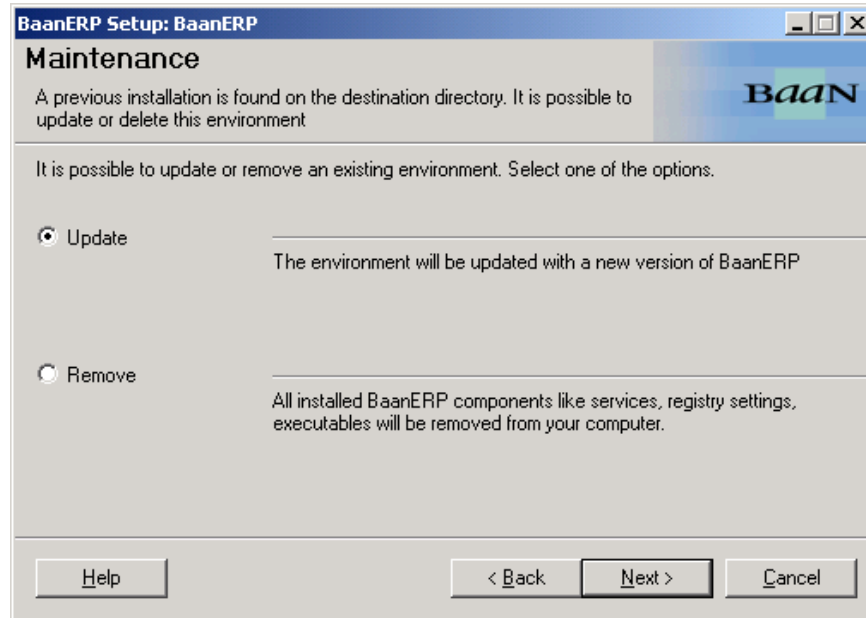
- 5 Select **Accept** if you agree on the License Agreement. Click **Next** to continue; the **Location** dialog box appears.



- 6 Select the location of the iBaan ERP environment you want to update and click **Next** to continue; the **Environment** dialog box appears.

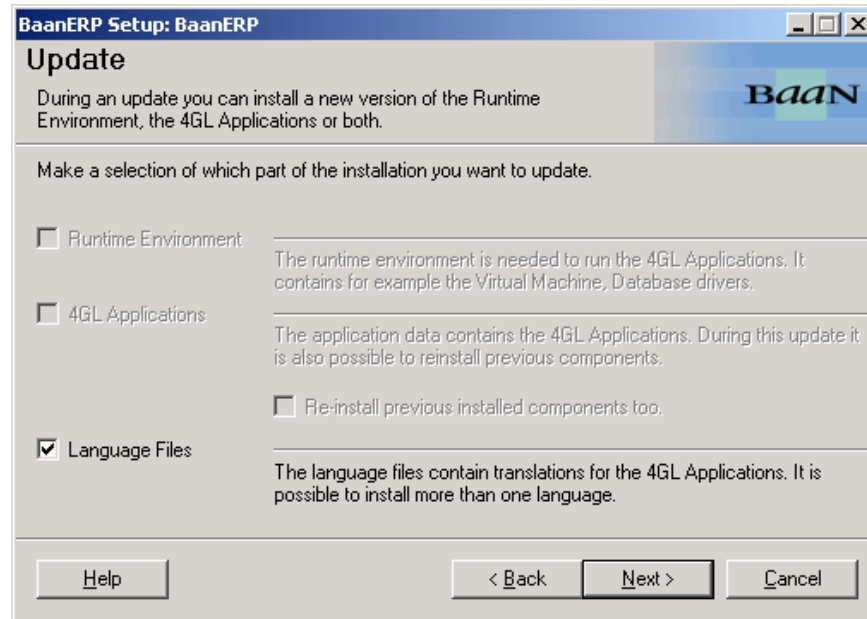


- 7 Select the environment for the update. Note that when you install the update from another computer than was used for the initial installation, you must re-enter the environment name. Click **Next**; the **Hostname** dialog box appears.
- 8 Enter the host name and logon code(s). Check whether the names are correct. Click **Next** to continue; the **Destination Directory** dialog box appears.
- 9 Enter and check the destination directory. Click **Next** to continue; the **Maintenance** dialog box appears.



- 10 Select **Update** and click **Next**.

The **Update** dialog box appears.

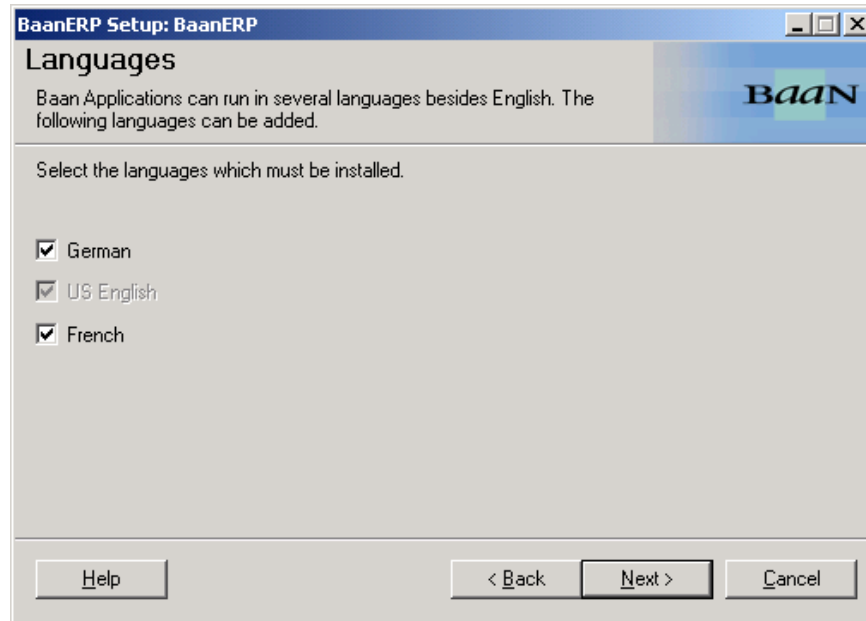


- 11 Select the part of the installation you want to update. This example shows an iBaan ERP installer dialog box that only contains Language Files for the update. However, it is also possible that the iBaan ERP installer contains Run-time Environment or 4GL Application parts or iBaan ERP installations with a combination of these parts.

If you select **4GL Applications**, the following additional option will appear: **Re-install previous installed components too**.

If you select this option, the formerly installed components will be overwritten by the update. Select the part you want to update and click **Next** to continue.

- 12 For a Language Files update, the **Languages** dialog box appears.

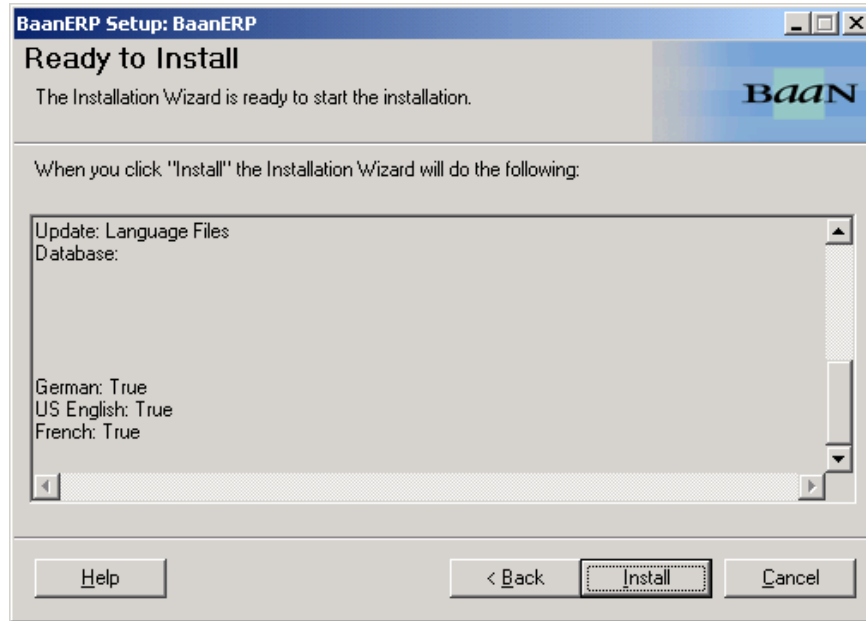


- 13 Select the language you want to install. Click **Next** to continue.

NOTE

In case of a 4GL Applications update, a similar dialog box will appear. In this dialog box you will see several available packages to install. Select the package combination you want to install.

- 14** The **Ready to Install** dialog box appears. Check the listed installation details and click **Install** to start the actual installation. Click **Back** if you want to make any changes.



- 15** When the installation has completed, the **Finish** dialog box appears. Click **Close** to finalize the installation.

This completes the update process.

2 Porting set update on Windows

This chapter describes a porting set update on a Windows 2000 platform. Use the online Help provided on the installation dialog boxes to help you through the installation process. Click **HELP (F1)** on each dialog box for which you need supporting information.

What is a porting set?

A porting set is a set of binaries that are operating system dependent. They serve as an interpreter layer between the operating system and the iBaan application software. Baan regularly releases a new porting set. A mail fix number recognizes every modification made in the porting set.

Every porting set has a port number. Initially, all binaries have the same port number. If a fix is made on a binary before the next porting set is delivered, that binary will have another (higher) port number.

To update iBaan ERP software on Windows

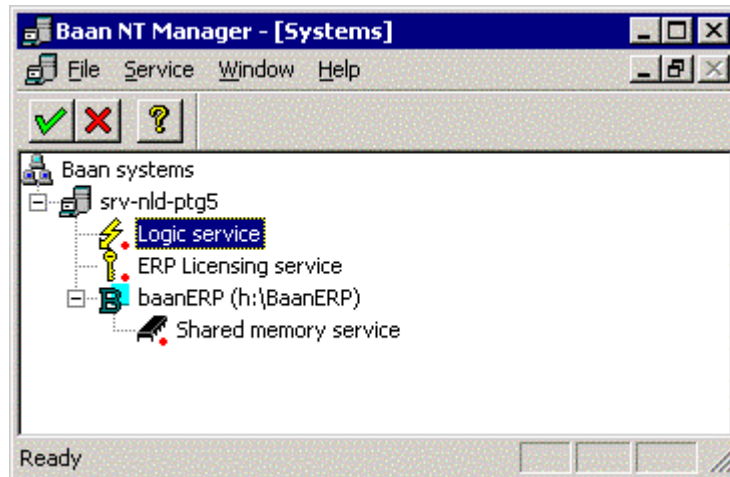
NOTE: Before you start the porting set installation, check the Baan Global Support Web site www.support.baan.com. On this Web site you can find the latest information about known installation problems or important solutions that were created after the release of the porting set you want to install.

Install the porting set software from a local Windows 2000 workstation. First, you must shutdown your iBaan ERP environment.

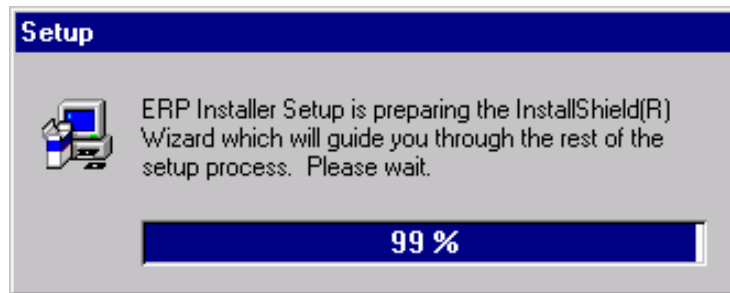
NOTE: You cannot use Windows 2000 terminal services client. Log on to the server or use a remote desktop application.

If the iBaan ERP environment is running, you must complete the following steps:

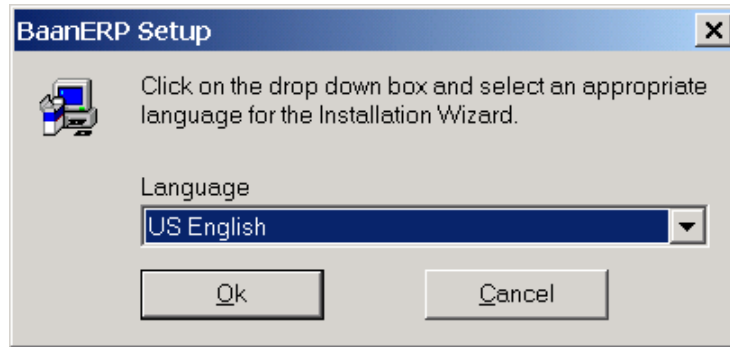
- 1 Start the Baan NT Manager.



- 2 Right-click the Server and click **Stop**. Note that when there is more than one environment running on this server, the other environment will also be stopped. Now you can continue with the update of your iBaan ERP software.
- 3 Close all running applications and start **setup.exe** from the \setup directory of the iBaan ERP Tools CD-ROM. The following screen will appear.



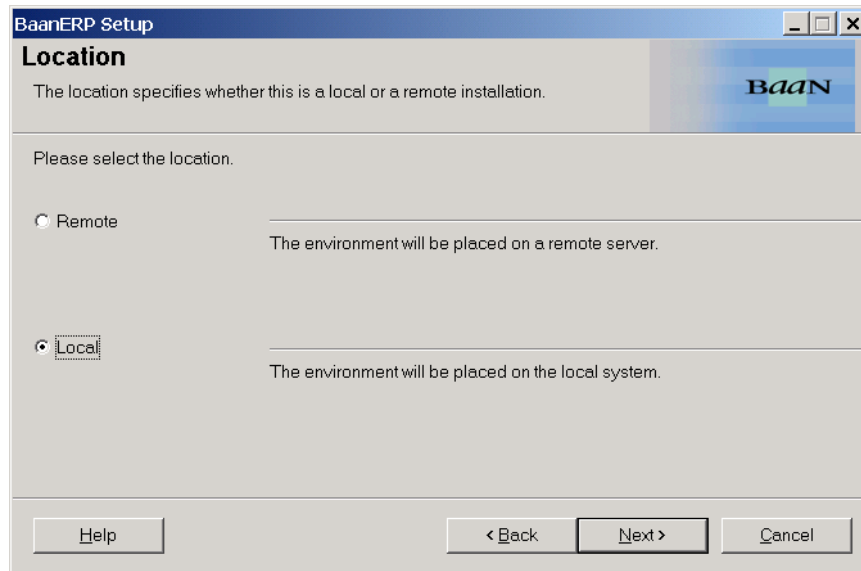
- 4 The following screen that will automatically appear is the **Language** dialog box.



- 5 Select a language in which you want the Installation Wizard to guide you through the installation process. Click **OK** to continue. The **Welcome** dialog box appears.
- 6 Click **Next**; the **License Agreement** dialog appears.

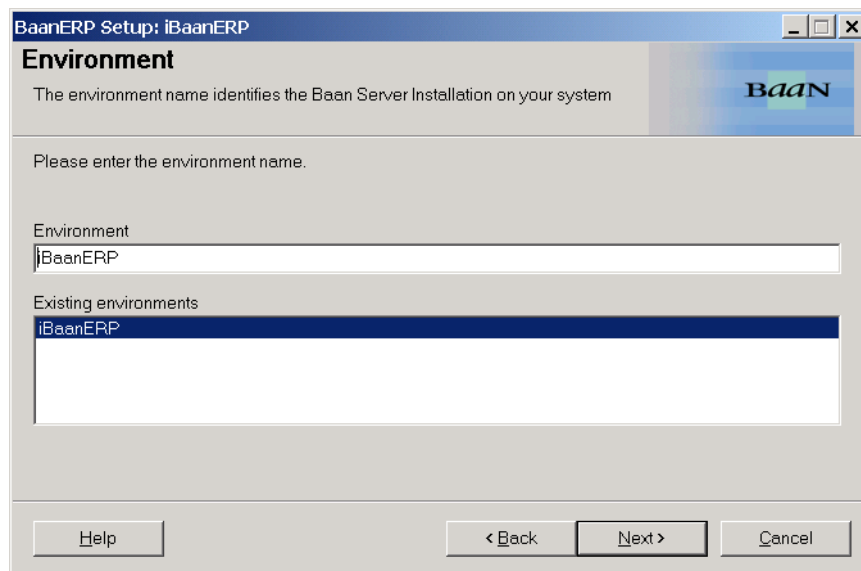


- 7 Select **Accept** if you agree on the License Agreement. Click **Next** to continue; the **Location** dialog box appears.



- 8 iBaan ERP installations on UNIX, OS390 or AS400 platforms are **Remote** installations. iBaan ERP installations on Windows 2000 are **Local**. Select the **Local** location of the iBaan ERP installation. Click **Next** to continue.

- 9 The **Environment** dialog box appears.



- 10 Select the environment for the update. Note that when you install the update from another computer than used for the initial installation, you must re-enter the environment name. The **Hostname** dialog box appears.

BaanERP Setup: pleersni_env

Hostname

BAAN (Master) Application Server hostname and logon code.

Hostname and logon code for the MAS or AS server.

Hostname: CNL09834

Logon Code: pleersni

Help < Back Next > Cancel

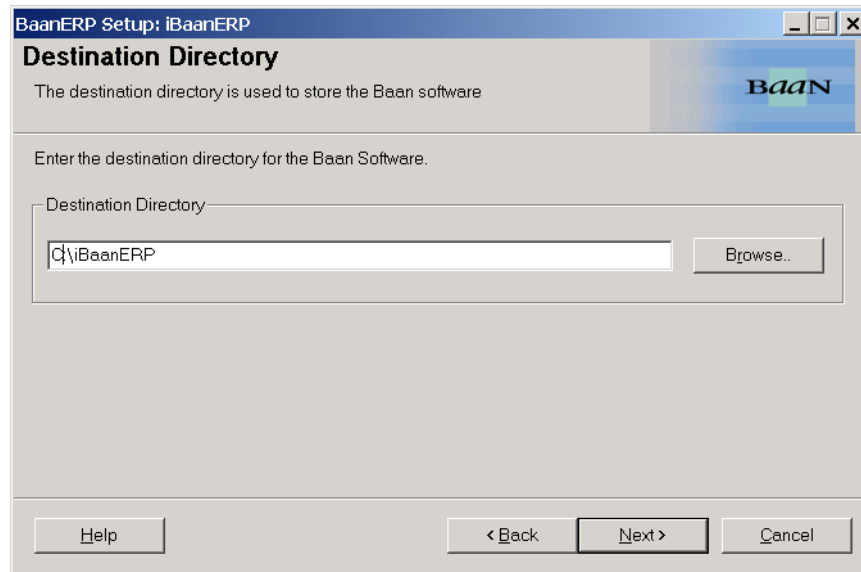
- 11 The **Host name** is the system name of the (Master) Application Server where your iBaan ERP software is installed. The fields are already filled.

NOTE

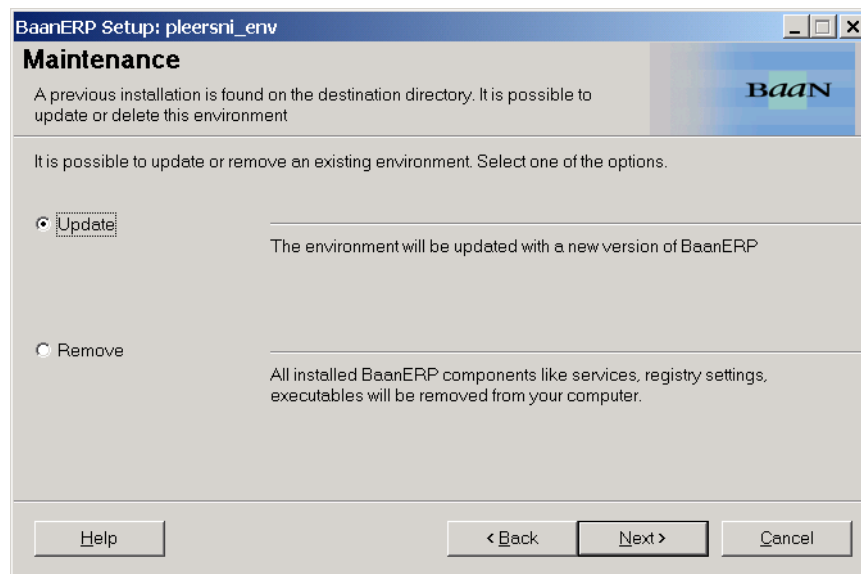
Typically, the **Logon Code** field is filled with the login **Baan**.

Two different setup types are available. The **Baan Master Application Server (MAS)** or the **Baan Application Server (AS)**. If you want to update a Baan Enterprise Cluster, you must first update a **Baan MAS** installation and update the **Baan AS** installations later.

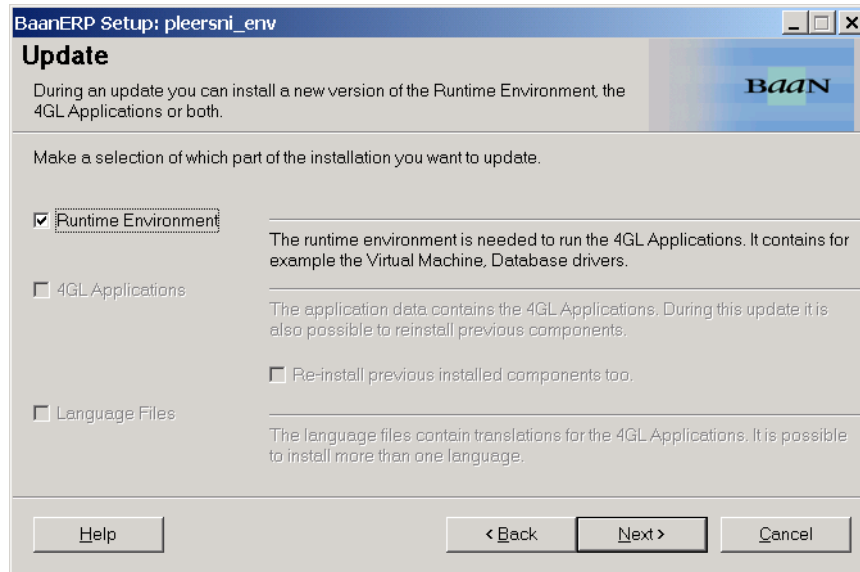
Check the information and click **Next** to continue. The **Destination Directory** dialog box appears.



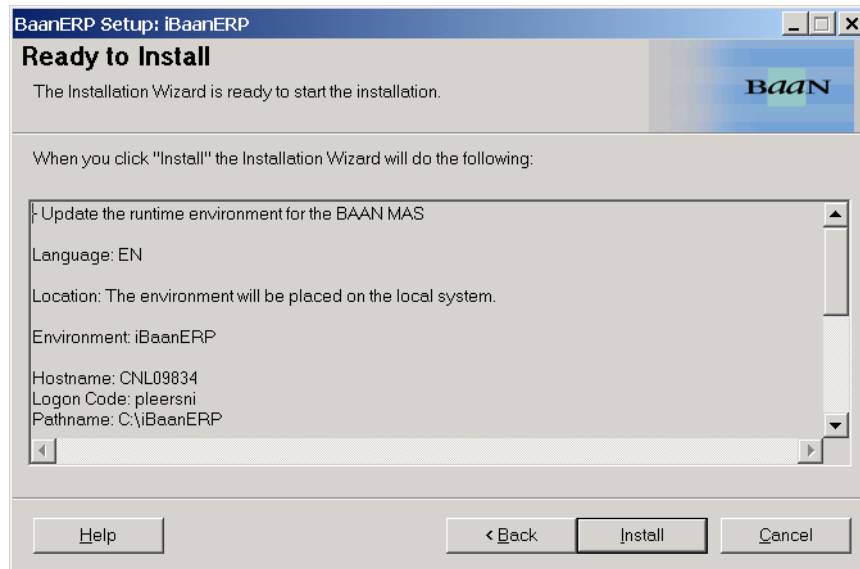
- 12 The path entered in the **Destination Directory** dialog box is the directory in which the iBaan ERP software is installed. Check the destination directory and click **Next** to continue; the **Maintenance** dialog box appears.



- 13 Select **Update** and click **Next**. The **Update** dialog box appears.

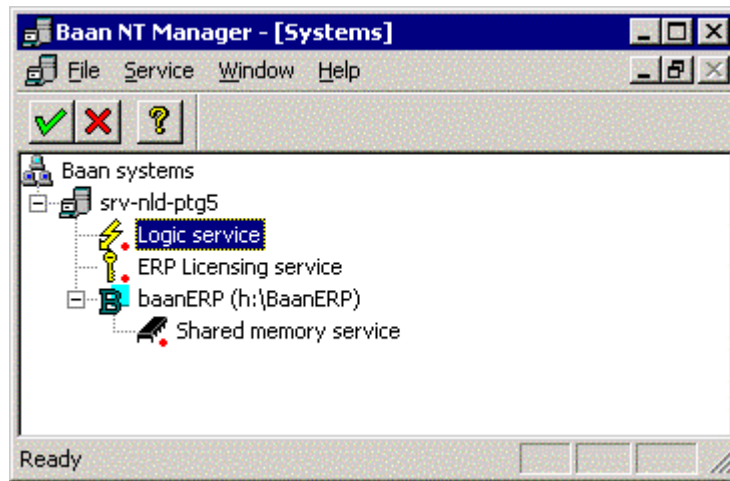


- 14 To update a porting set, you must select **Runtime Environment** and click **Next** to continue. The **Ready to Install** dialog box appears.



- 15 Check the listed installation details and click **Install** to start the update installation.

- 16 When the installation is finished the **Finish** dialog box appears. Select **Close** to finalize the installation. You can restart the iBaan ERP environment.
- 17 Start the Baan NT Manager.



- 18 Right-click the Server and click **Start**

3 Porting set update on UNIX

This chapter describes a porting set update on a UNIX platform. Use the online Help provided on the installation dialog boxes to help you through the installation process. Click **HELP (F1)** on each dialog box for which you need supporting information.

What is a porting set?

A porting set is a set of binaries that are operating system dependant. They serve as an interpreter layer between the operating system and the iBaan application software. Baan regularly releases a new porting set. A mail fix number recognizes every modification made to the porting set.

Every porting set has a port number. Initially, all binaries have the same port number. If a fix is made on a binary before the next porting set is delivered, that binary will have another (higher) port number.

To update iBaan ERP software on UNIX

NOTE Before you start the installation of the porting set, please check the Baan Global Support Web site www.support.baan.com. On this Web site you can find the latest information about known installation problems or important solutions that were created after the release of the porting set you want to install.

Install the porting set software from a local Windows 2000 workstation. First, you must shutdown your iBaan ERP environment.

NOTE You cannot use Windows 2000 terminal services client. Log on to the server or use a remote desktop application.

If the iBaan ERP environment is running, you must complete the following steps:

- 1 Logon as **root** on your UNIX system.
- 2 Change directories to **\$BSE/etc** as follows:

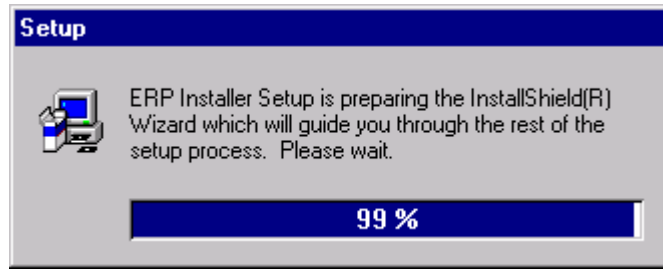
```
#cd $BSE/etc
```

- 3 Run the script **rc.stop** as follows:

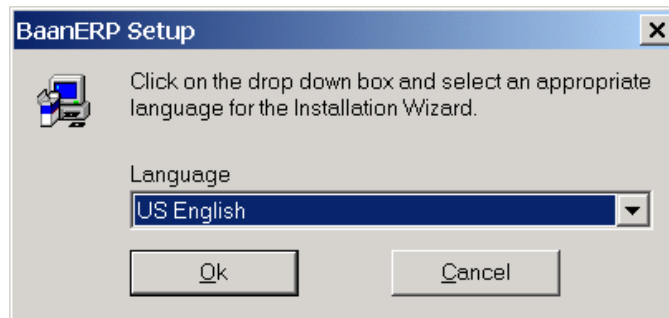
```
#!/rc.stop
```

Now you can start the setup to update your iBaan ERP software. To do this, close all running applications and start **setup.exe** from the **\setup** directory of the iBaan ERP Tools CD-ROM.

The following screen will appear.



- 4 The following screen that will automatically appear is the **Language** dialog box .

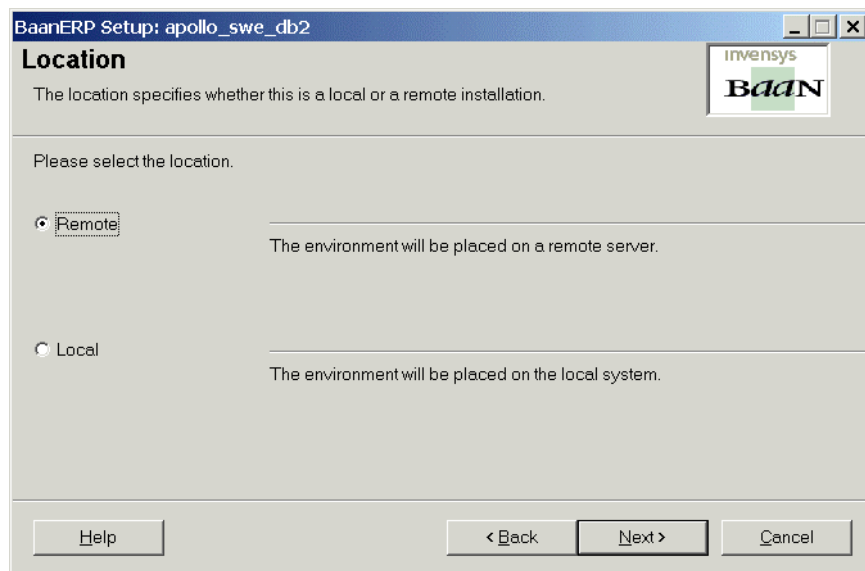


- 5 Select a language in which you want the Installation Wizard to guide you through the installation process. Click **OK** to continue. The **Welcome** dialog box appears.

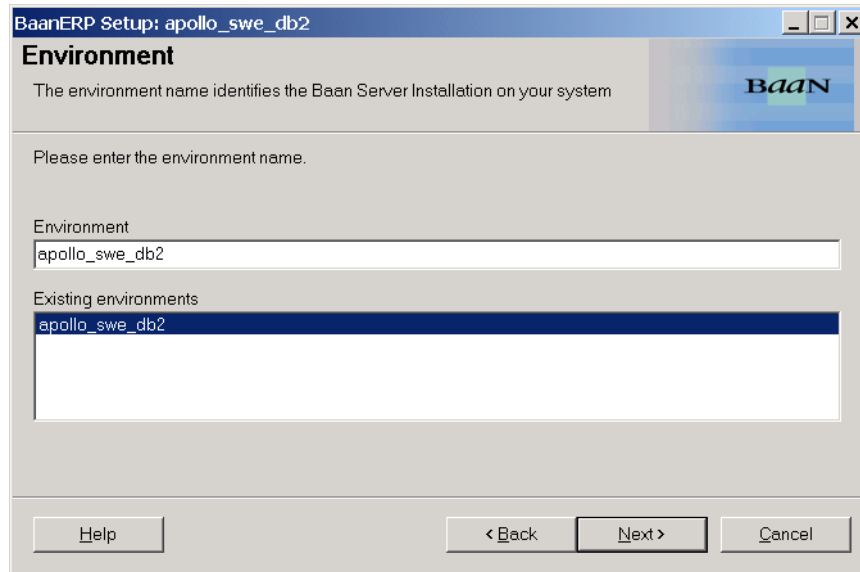
- 6 Click **Next**. The **License Agreement** dialog appears.



- 7 Select **Accept** if you agree on the License Agreement. Click **Next** to continue; the **Location** dialog box appears.



- 8 iBaan ERP installations on UNIX, OS390 or AS400 platforms are **Remote** installations. iBaan ERP installations on Windows 2000 are **Local**. Select the **Remote** location of the iBaan ERP installation. Click **Next** to continue; the **Environment** dialog box appears.



The dialog box is titled "BaanERP Setup: apollo_swe_db2". It has a "Baan" logo in the top right corner. The main heading is "Environment". Below it, a text box says "The environment name identifies the Baan Server Installation on your system". A prompt says "Please enter the environment name." Below this is a text input field containing "apollo_swe_db2". Underneath is a list box titled "Existing environments" which also contains "apollo_swe_db2". At the bottom are three buttons: "Help", "< Back", and "Next >", and a "Cancel" button on the far right.

- 9 Select the environment for the update. Note that when you install the update from another computer than used for the initial installation, you must re-enter the environment name.

The **Hostname** dialog box appears.

BaanERP Setup: apollo_swe_db2

Hostname

For the BAAN (Master) Application Server hostname, logon code and password of the server must be specified.

Enter hostname, logon code and password for the MAS or AS server.

Hostname:

Logon Code:

Password:

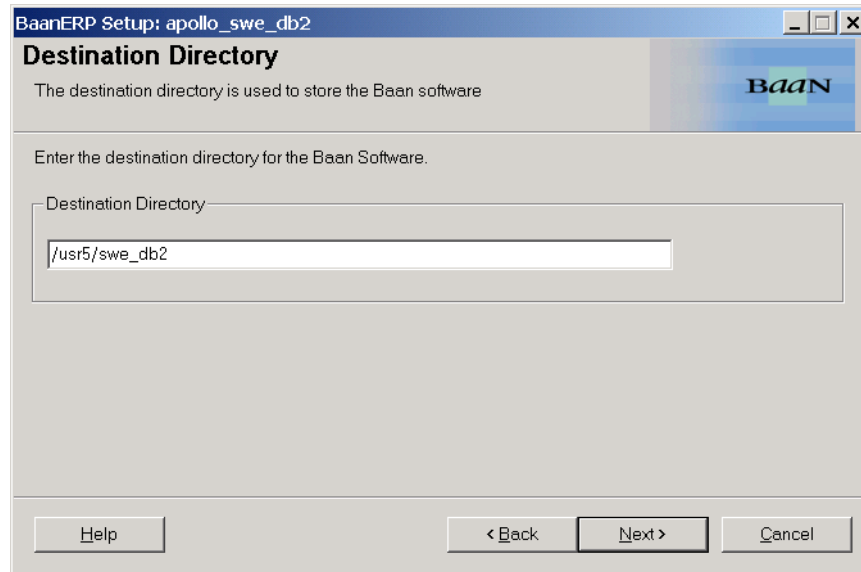
Super User Password:

Help < Back Next > Cancel

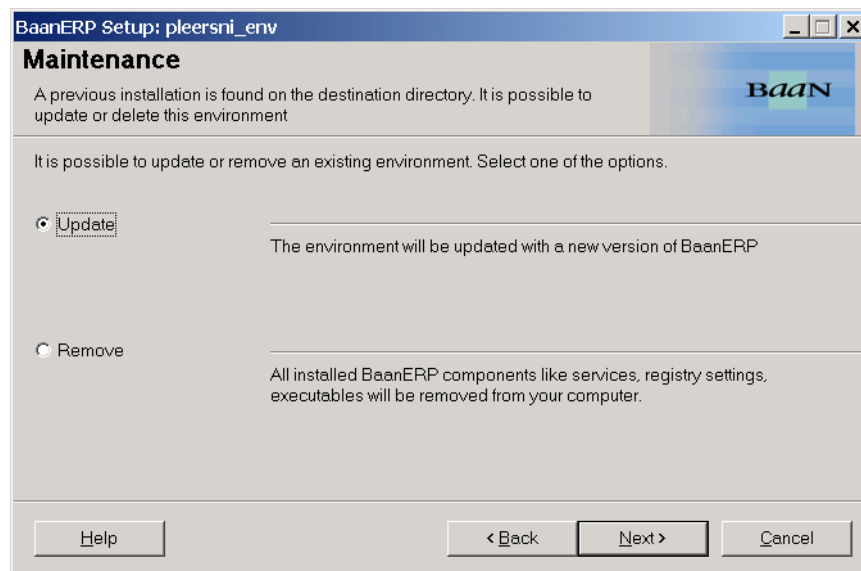
- 10** The **Host name** is the system name of the (Master) Application Server where you install your iBaan ERP software. The fields are already filled in. Check the filled information.

Note that two different setup types are available. The **Baan Master Application Server (MAS)** or The **Baan Application Server (AS)**. If you want to update a Baan Enterprise Cluster, you must first update a **Baan MAS** installation and update the **Baan AS** installations later. Click **Next** to continue.

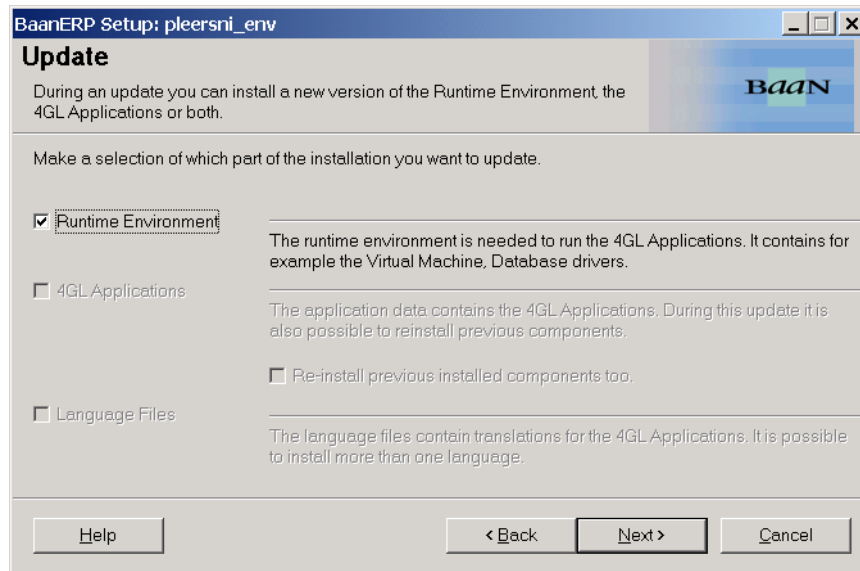
The **Destination Directory** dialog box appears.



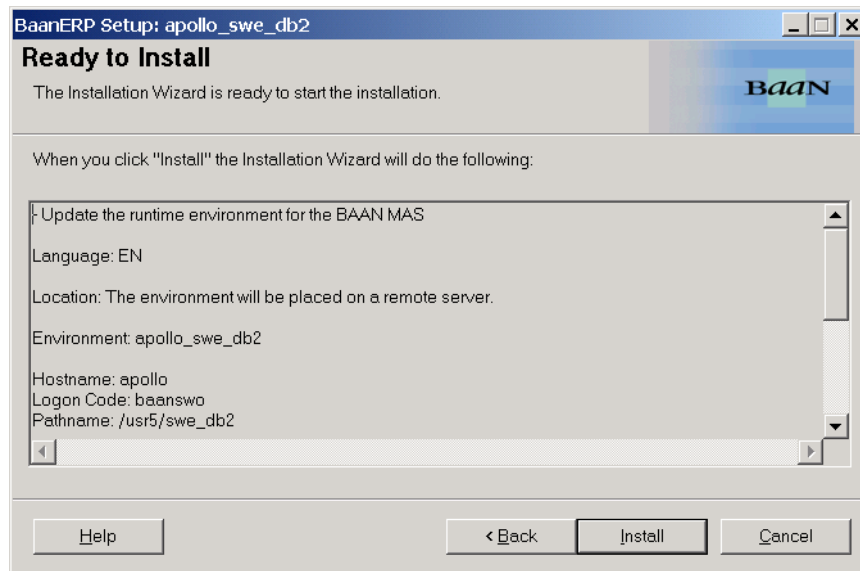
- 11 The path entered in the **Destination Directory** dialog box is the directory in which the iBaan ERP software is installed. Check the destination directory and click **Next** to continue. The **Maintenance** dialog box appears.



- 12 Select **Update** and click **Next**. The **Update** dialog box appears.



- 13 Select **Runtime Environment** and click **Next** to continue. The **Ready to Install** dialog box appears.



- 14 Check the listed installation details and click **Install** to start the actual update.
- 15 When the installation is finished the **Finish** dialog box appears. Click **Close** to finalize the installation and restart the iBaan ERP environment.

- 16** Logon as **root** on your UNIX system.
- 17** Change directories to **\$BSE/etc** as follows:

```
#cd $BSE/etc
```

- 18** Run the script **rc.start** as follows:

```
#./rc.start
```